



venome®



VENOME FULL PRP KIT

PROFESSIONAL KIT FOR THE COMPLETE PRP VENOME FULL KIT PROCEDURE

VENOME FULL PRP KIT

**TREATMENT SAFETY. WEALTH OF USES.
AUTOLOGOUS PRP THERAPY. FOR EVERYONE.
A RELIABLE TISSUE STIMULATOR ALWAYS AT HAND.**

Professional kit for the complete PRP Venome FULL KIT procedure.



**THE VENOME KIT CONTAINS ALL THE COMPONENTS NECESSARY
TO PERFORM A PLATELET RICH PLASMA TREATMENT**

Autologous therapies are characterised by the use of material obtained **from the patient's blood** during treatment. Commonly referred to as a "vampire lifting", platelet-rich plasma has many properties, including regenerating, rejuvenating and accelerating healing.

After centrifugation, we obtain a preparation that is an **indispensable stimulator** for tissue **repair** through autologous cell therapy. The treatment is an ideal solution for revitalising the skin in practically **most cases**, which is why **its popularity in aesthetic medicine offices continues to grow**.

PRP is most commonly used for mature skins that have lost their elasticity and firmness, as well as skins with visible wrinkles and pigmentation disorders and in the treatment of acne scars. In addition, treatments based on this innovative technology have been used in the treatment of alopecia of various origins, stretch marks, vascular skin problems, where a significant improvement in resolving erythema has been noted, by reconstructing the skin along with a reduction in its reactivity.

WHAT ARE THE BENEFITS OF PRP TREATMENTS?

- 1** Platelet-rich plasma treatments are one of the most popular treatments alongside tissue stimulators, which are often considered to support therapies with stimulating products, such as Venome Amber
- 2** The procedure using PRP does not involve the risk of any allergic reactions, due to the collection of autologous material (patient's blood)

WHY CHOOSE VENOME?

no allergens – anticoagulant tubes (ACD)

safety – confirmed by a medical certificate

support – instructions for full performance of the treatment using the kit

comprehensiveness – the kit contains the necessary components for the procedure, such as 2 x 10 ml tubes with anticoagulant, 1 x 10 ml resuspension tube, blood collection needles, needles for the procedure, syringes

speed – you don't waste time looking for additional elements to perform the treatment

CONTENTS OF THE KIT

2 Pieces: 10ml PRP Tubes

1 Piece: 10ml Re-suspension Tube

1 Piece: 18G/90mm Long Needle

1 Piece: Handle

1 Piece: 1ml Syringe

1 Piece: 5ml Syringe

1 Piece: 30G/13mm Needle

1 Piece: 21G/40mm Needle

1 Piece: Blood Collection Needle

TREATMENT PROTOCOL

Follow the instructions below to obtain platelet-rich plasma using the PRP KIT:



1. Open the box.



2. Open the sterile blister.



3. Connect the blood collection needle to the holder.



4. Decontaminate the skin and then, using the blood collection needle, insert it into the appropriate vein.



5. Connect the PRP tube inside the blood collection needle holder (Routine blood withdrawal).

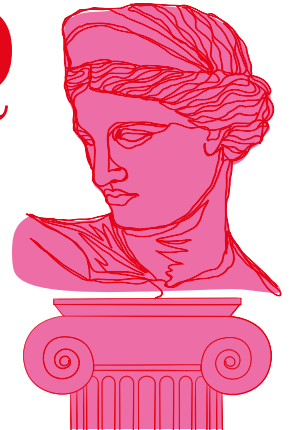


6. The VENOME PRP tube is a vacuum tube. The tube collects enough blood and then the collection stops. Use both tubes without removing the needle to draw blood from the vessel, in order to obtain the optimal amount of autologous material for the procedure.

Treatment completed



7. After blood collection, place both tubes in a centrifuge and centrifuge the material as recommended in the table below. The choice of procedure depends on the individual indications of the patient and the recommendations of the professional.



	Centrifuge with a fixed rotor	Centrifuge with a rotating rotor
Pure PRP Protocol	500 RCF and 3 minutes	1150 RCF and 4 minutes
Amber PRP Protocol	500 RCF and 6 minutes	1150 RCF and 8 minutes

500 RCF=2000 RPM, 1150 RCF=2900 RPM

CONTRAINDICATIONS

Contraindications to the procedure: pregnancy and breastfeeding, viral infections, blood coagulation disorders, taking anticoagulants, liver disease, blood diseases, critical thrombocytopenia, tumours, platelet dysfunction syndromes, haemodynamic instability, acute conditions resulting from autoimmune diseases.

WARNINGS

- Do not use if any parts are damaged.
- When discarding this product after use, comply with current regulations for the recycling and disposal of medical materials.
- Store medical accessories in a cool and dry place, away from chemical substances.
- Do not store under conditions of high temperature and humidity.
- Medical accessories are single-use medical devices.
- Used needles may be contaminated and should be disposed of in accordance with national/company guidelines.
- Reuse may result in infection or other conditions.
- Do not sterilise.
- Keep away from children.
- The product should be used in accordance with its intended purpose.
- The product is intended for use by a professional.

AMBER PRP

LR-PRP (leukocyte-rich PRP) - used to accelerate wound healing or regenerative potential.

PURE PRP

LP-PRP (leukocyte-poor PRP)-used for the stimulation.

- The basket in the centrifuge should be compatible with 16 X 100 mm PRP tubes.
- Connect the long needle to a 5 ml Luer-lock syringe.
- Collect PRP by inserting a long needle into the PRP tube above the RBC layer (do not open the tube lid unless under laminar flow conditions).
- After the pure PRP protocol, collect all plasma above the erythrocyte layer.
- Following the PRP amber protocol, the leucocyte coat should be collected along with 2ml of plasma above the erythrocyte layer.
- Carefully collect the PRP layer from both tubes.
- Transfer the PRP into a resuspension tube for resuspension.
- Gently shake the resuspension tube for 30 seconds to homogenise the deposition of any clumped cells in the plasma medium. (Resuspension process).
- Attach the collection needle (green needle - 21G) to a 1 ml Luer-Lock syringe.
- Collect PRP from inside the resuspension tube.
- Change the collection needle (green needle - 21G/70mm) to the injection needle (yellow needle - 30G/13mm).
- Use the appropriate injection method. From the moment of centrifugation, the plasma should be administered within a maximum of 20 minutes.

THE TREATMENT SHOULD BE CARRIED OUT BY A PROFESSIONAL.



venome®

✉ office@venome-global.com

📘 [@venomeofficial](#)

🌐 www.venome-global.com